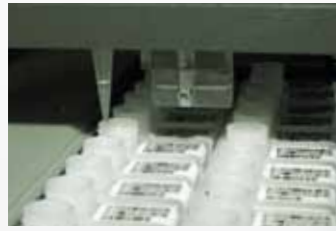
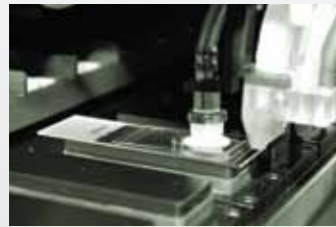


eXACT™ Temperature Control on Every Slide



Liquid Level Sensor and Reagent Dispensing System



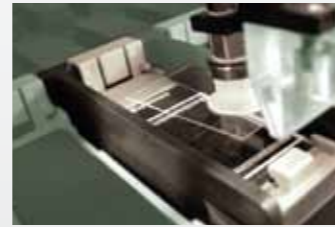
Reaction Micro-chamber with Micro-fluidics



LIS Enabled System



RFID and Barcode Enabled Platform Technology



On-board Dehydration and Final Coverslip

Contact Information:

USA: 49026 Milmont Drive, Fremont
CA 94538, USA

T: +1-800-421-4149
F: +1-510-824-1490

India: 225 Cherlapally, Industrial Development Area, Phase II
Hyderabad, Andhra Pradesh, India 500051

T: +91-40-27185500
F: +91-40-27185511/21

China: 1419 - 14F, Jingjiang Xiangyang Tower
993 Nanjing Xi Road (W), Shanghai, 200041, China

T: +86-21-22111550
F: +86-21-22111520



www.biogenex.com
e-mail: support@biogenex.com

All-in-One All-at-Once





Microtome to Microscope



Xmatrix[®]ELITE Microtome to Microscope

*Fully automated System from Microtome to Microscope...
For Molecular Pathology Laboratory of Today Tomorrow and beyond*

- All-in-one All-at-once IHC, ISH, SS, Multiplex Stains and Co-detection
- FISH*

- Adaptable workflow solution for efficiency, enhanced productivity and profitability
- Standardized process from baking through final coverslip
- High throughput - 100 slides per day, 60 slides in eight hour shift, and 40 slide in a delayed overnight run
- Slide processing options: Random, Continuous and STAT
- Multi-format specimen processing: Frozen, FFPE, Cell Preparations, Smears and FNAs
- Color coded GUI -real time tracking of all assay parameters
- Audio and visual alerts
- LIS - enabled data tracking and management*
- Multiple standard and customizable reporting capabilities at your fingertips

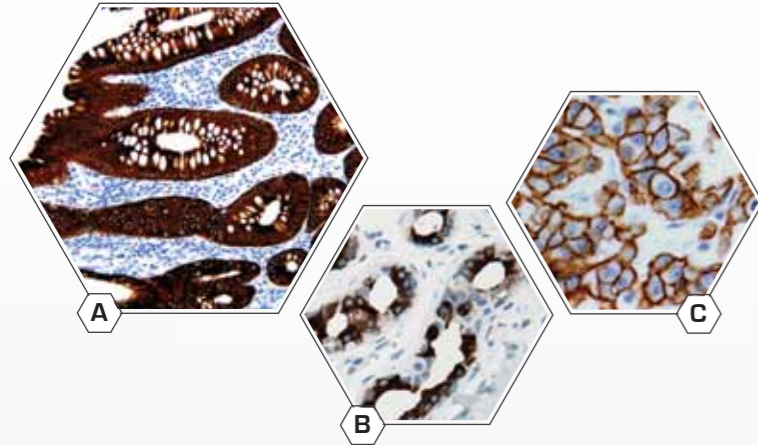
*optional software

*optional

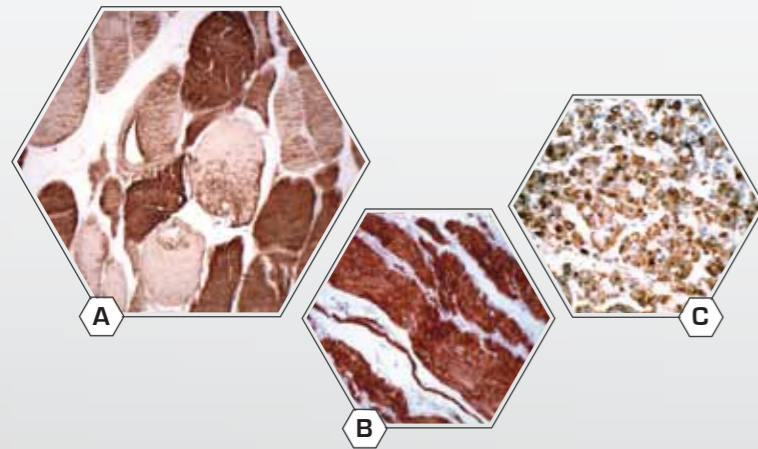
All-In-One All-At-Once Fully Automated System

for IHC, ISH, SS and Multiplex Stains

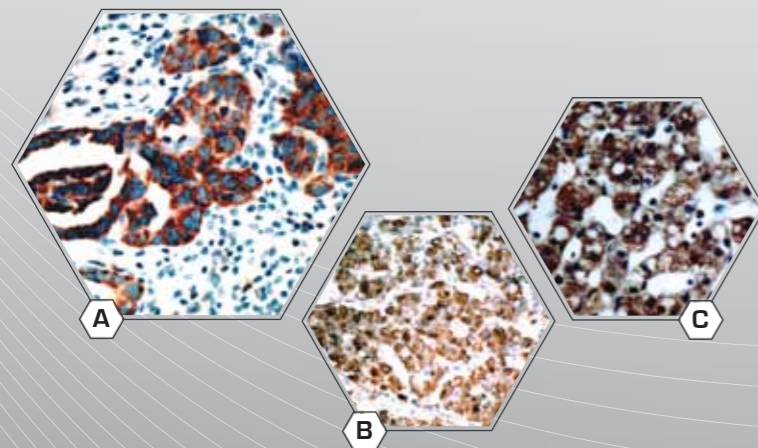
IHC



- A. Anti-CK18
- B. Anti-GCDFP-15
- C. Anti-HER2

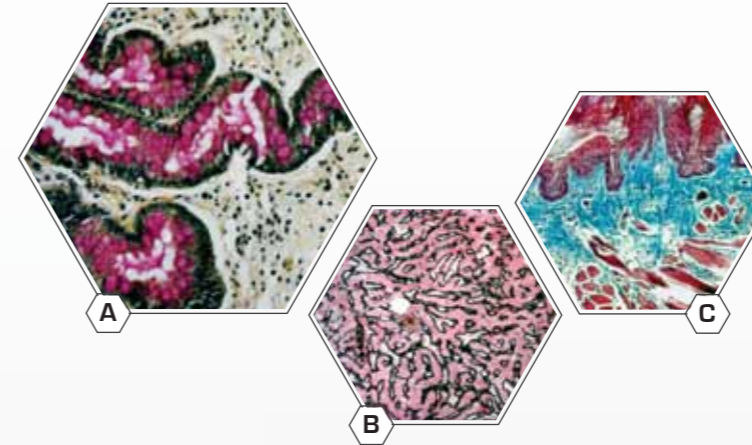


- A. Actin, Muscle-Specific
- B. Actin, Smooth Muscle
- C. ACTH

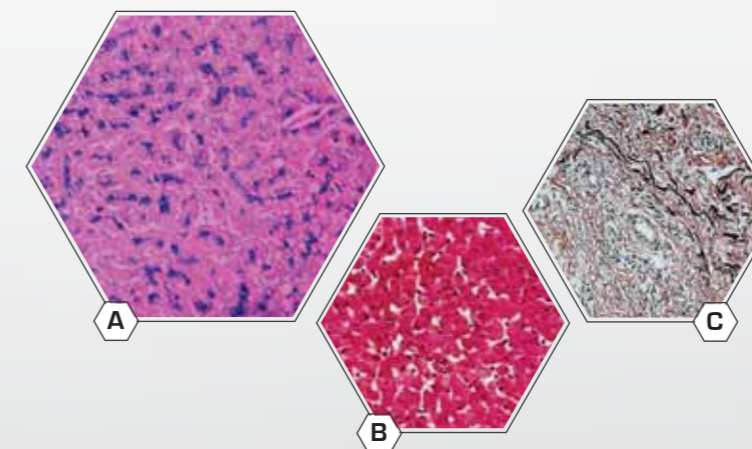


- A. Bcl-x
- B. Anti-GCDFP-15
- C. Alpha-Fetoprotein (AFP)

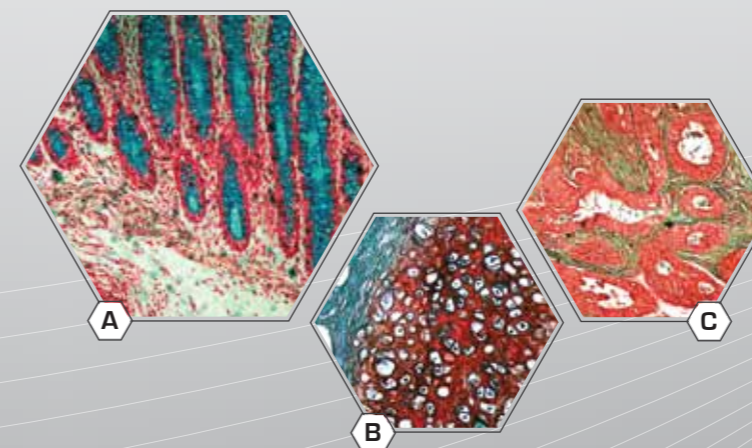
Special Stains



- A. Mucicarmine in Intestine
- B. Reticulin-Nuclear Fast Red
- C. Masson's Trichrome in Skin



- A. Iron Stain
- B. PAS in Liver
- C. Elastin in Skin



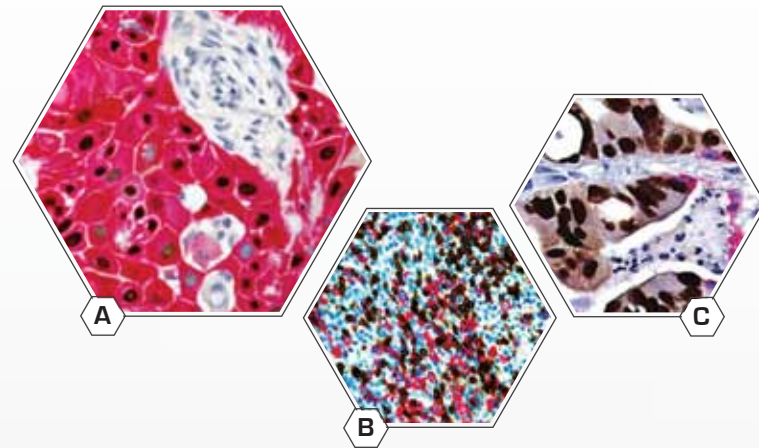
- A. Alcian Blue-Nuclear Fast Red-Intestine
- B. Safranin O Staining in Cartilage
- C. Gomoris Green in Intestine

Microtome to Microscope

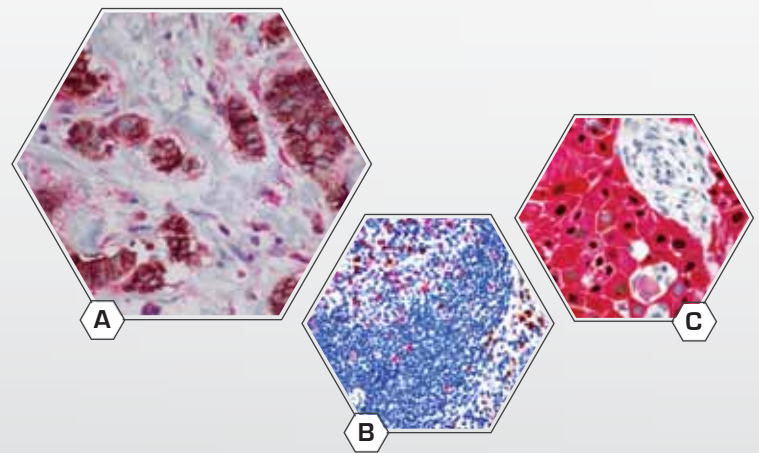
All-In-One All-At-Once Fully Automated System

for IHC, ISH, SS and Multiplex Stains

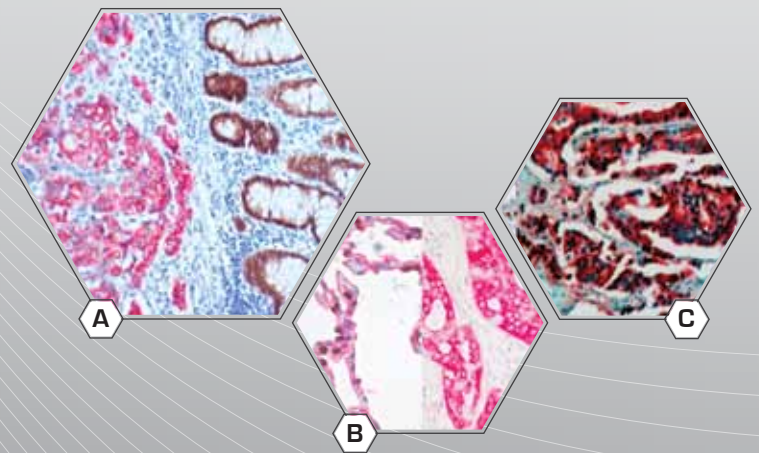
Multiplex Stains



- A. SCC - anti-p63 + anti-CK5
- B. Tonsil - anti-CD3 + anti-CD20
- C. Metastatic Carcinoma in Lung - anti-CDX2 + anti-CK7

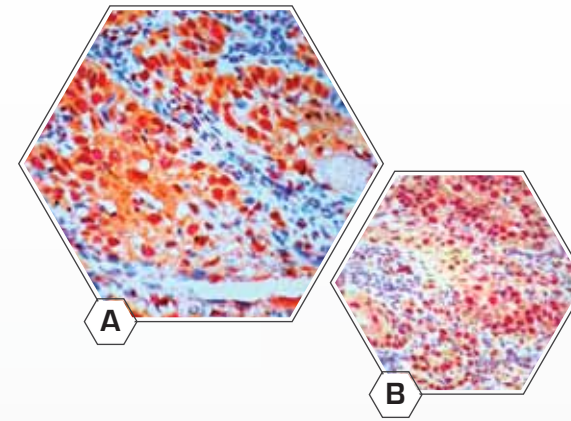


- A. E-Cadherin + p120 Catenin
- B. Ki67 + Lambda
- C. p63 + CK5



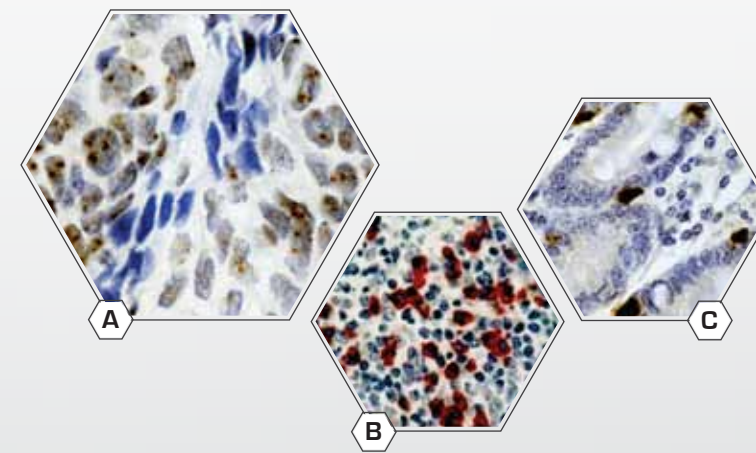
- A. anti-CDX-2 + anti-CK20 + anti-CK7
- B. anti-TTF-1 + anti-CK20 + anti-CK7
- C. PIN4 [p63+CK HMW+p504S]

Co-detection of IHC & ISH (miRNA)

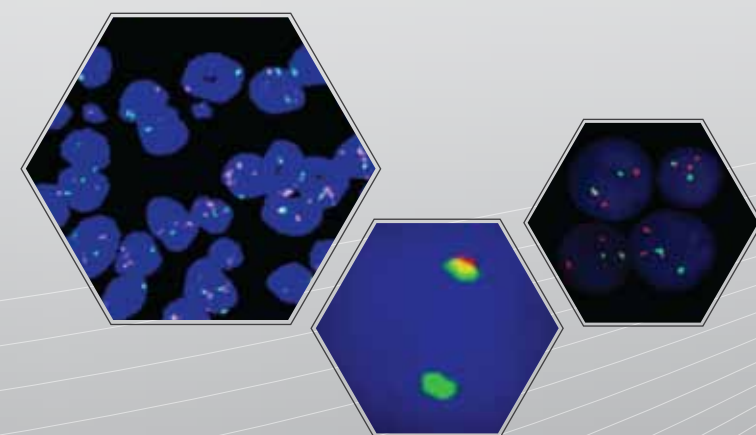


- A. miR-146a + Anti-ki67
- B. miR-146a + Anti-p53

ISH



- A. HPV 16&18
- B. Kappa Probe
- C. Cyclin D1 Probe



FISH*

*optional software

Microtome to Microscope