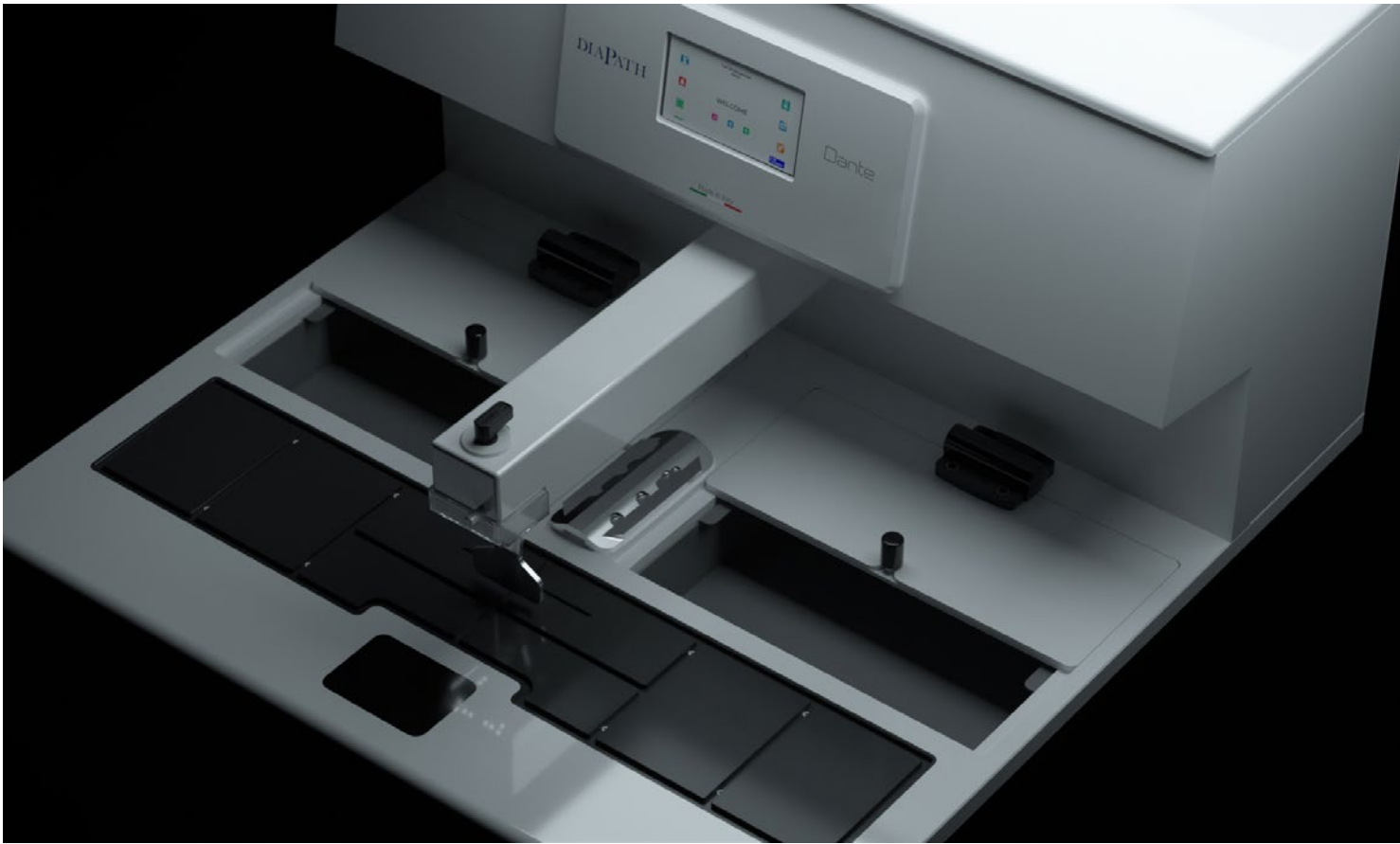


# DIAPATH

Constant Innovation in Anatomic Pathology



# Dante

The Embedding System for  
the best comfort and efficiency

EMBEDDING MODULE + COLD PLATE

SDSDC9000

SDSDF9000

SDSDF9100



IVD CE

MADE IN ITALY

# Dante, 100% Made in Italy.

Dante is referred to as the **Supreme Poet and Father of the Italian language**. For Diapath, Dante is what we believe in. **Made in Italy and Italian Design** are not just inspirations, but Values we live every day: **Love for Beauty and Well-Made things**. This is our **Way to Excellence**.

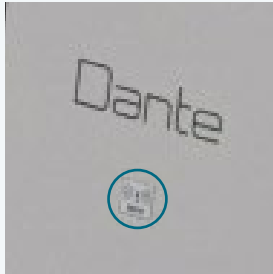


## The Modular solution, designed to simplify the workflow.

**Custom-made comfort.** We know very well how much it is necessary to make working procedures **fast**, and above all **comfortable**, in lab-life. We know very well how much it is necessary in the lab to make working procedures fast and above all comfortable. That's way, **Diapath has developed Dante, the System including Embedding Module and Cold Plate**. Dante allows to improve both posture and to **protect the musculoskeletal system** of the healthcare professional over time, thanks to its linear, **ergonomic and functional design**. Furthermore, Dante Embedding System consists of independent and flexible modules, able to save space in the laboratory. For this reason, **Diapath has developed Dante, the Combo solution including Embedding Module and Cold Plate**.

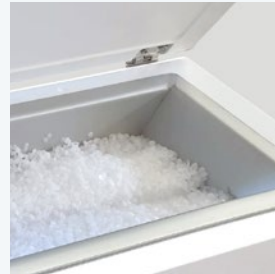


# The unique advantages of Dante, designed for you.



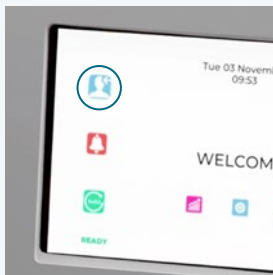
## RFID TECHNOLOGY

Advanced traceability functions.



## TANK INCREASED BY 6 L

For an autonomy increased by 35%.  
The wide paraffin tank is equipped with a filtration system, capable of holding all the impurities present in the paraffin grains.



## CUSTOMIZATION OF ID USER PROFILE

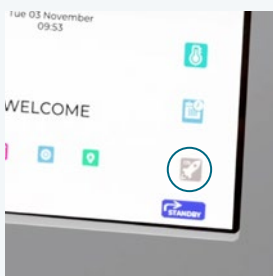
Possibility to set advanced personalization options by Avatar.



## ULTRASONIC SENSOR

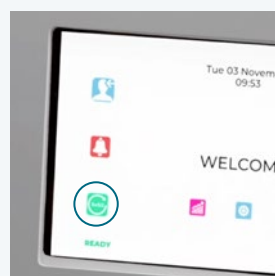
The Innovative system offers the possibility of dispensing paraffin automatically detecting the mould under the dispensing arm.

# The system advantages.



## BOOST FUNCTION

For full operation just 30 minutes after switch-on.



## REFILL FUNCTION

With immediate paraffin filling alert on the display.



**1 MODULAR SYSTEM**

The System consists of an Embedding module and a cold plate, fully combinable in multiple solutions.

**2 6L PARAFFIN TANK**

Paraffin can be melted with a temperature range of +50°C a +75°C

**3 WIDE HEATED SURFACE**

Equipped with grooves capable of draining the paraffin.

**4 LED LIGHT**

The work area is illuminated by the adjustable led light integrated in the dispensing head.

**5 INTUITIVE, EASY-TO-USE DISPLAY**

with **Smart Screen System**, the intelligent system is able to alert the operator with a visual signal of the system status.

**6 WIDE COLD PLATE**

For up to 126 standard cassettes or 33 super mega cassettes.

**7 ULTRASONIC SENSOR**

It is able to dispense paraffin by detecting the presence of the mould.

**8 OUTLINE CHANNEL**

For the collection of water after defrosting.

**9 HEATED AND REMOVABLE FORCEPS-HOLDER, TO PREVENT CROSS-CONTAMINATION**





## OPTIONAL ACCESSORIES



Magnifying lens with led light



Heated forceps suitable for DIAforceps Advance (2 mm e 1 mm)



Pedal controller



Wax scraper



Heated forceps DIAforceps Advance (2 mm e 1 mm)

## 1 DANTE, THE MODULAR SOLUTION



## Dante is: new functions, developed for you.



### Your performances always more green.

Dante allow to visualize instrument energy consumption in terms of eco-friendly performances.



Visualization of instrument's operation time and efficiency.



### PATENTED MATERIALS

The patented materials guarantee maximum protection against corrosion, wear and abrasion.



### EASY TO CLEAN

Dante allows an easy cleaning of the worktop even at low temperatures compared to standard materials.





## Dante is ergonomic design, because we take care of you.

### **AUTOMATIC PARAFFIN DISPENSER: COMFORT FOR THE OPERATOR**

The paraffin can be dispensed in three different ways: through manual dispensing lever, pedal controller or ultrasonic sensor. **This prevents the operator from repetitive and incorrect movements on the musculoskeletal system.**

### **MODULAR SOLUTION, COMPLETE FLEXIBILITY**

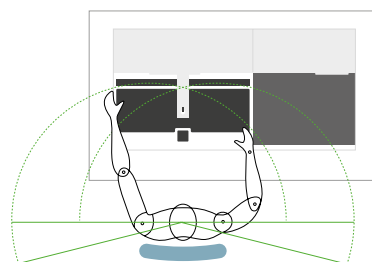
The modules can be arranged from left to right and vice versa, according to the operator's preferences, **for a safe postural balance.**



Area di lavoro bilanciata

SX

DX



## Dante is an intuitive and advanced software.

### **4.3" TOUCHSCREEN DISPLAY**

The display can be used with different types of gloves (vinyl, nitrile, latex).

### **COMPLETE CUSTOMIZATION**

Dante offers user-friendly icons and **fully customizable Avatars.**

### **INNOVATIVE REFILL FUNCTION**

Operators can be notified when the paraffin tank must be filled up, **avoiding work interruptions related to the paraffin absence.**





# Wide Cold Plate.

## POWERFUL COOLING SYSTEM

To reach the minimum temperature of -20 °C in about 10 minutes, allowing the solidification of 65 samples in less than 30 minutes. The temperature is managed and displayed by an integrated digital thermoregulator.

## LARGE CAPACITY IN MINIMUM SPACE

Provided with an outline channel for water collection after defrosting.



## Technical data

	EMBEDDING MODULE	COLD PLATE
CODE	SDSDC9000	SDSDF9000 (model 230V) SDSDF9100 (model 110V)
SIZE (W - D - H)	600x590x410 mm	400x590x410 mm
TANK CAPACITY	6 L	-
LIGHTING	Led with adjustable light	-
HEATING TIME	fully operative in 30 mins	-
COOLING TIME	-	-20 °C in 10 mins
USER INTERFACE DISPLAY	4,3" touchscreen display	touchscreen
OPERATING TEMPERATURE	from +50 °C to +75 °C	from -20 °C to room temperature
WEIGHT	30 kg	23 kg (model 230V) / 29 kg (model 110V)
REGULATORY STANDARD	CE-IVD-UL	CE-IVD-UL

Find out more and request a **virtual demo experience** with our product specialists

SCAN HERE



## Diapath complete range of solutions for Anatomic Pathology

			
<b>Donatello</b> SERIES 2 Automatic Tissue Processor	<b>Galileo</b> SERIES 2 Rotary Microtome	<b>Giotto</b> Automatic Stainer	<b>Cristallo®</b> Liquid Coverslipping Technology

Discover the complete range: [www.diapath.com/products](http://www.diapath.com/products)

## Acknowledgements DIAPATH

			
Co-funded by the "Horizon 2020" programme of the European Union	Donatello Series 2 wins A' Design Award and Competition 2019 in Scientific Instruments	34 <sup>th</sup> Design Award 2021 World Ranking in the category "Medical Appliances"	Approved CEU's Provider by NSH - National Society for Histology

LOCAL APPOINTED DEALER

### Diapath S.p.A.

Via Pietro Savoldini, 71 — 24057 Martinengo (BG)  
T +39 0363 986411 — [info@diapath.com](mailto:info@diapath.com) — [diapath.com](http://diapath.com)

